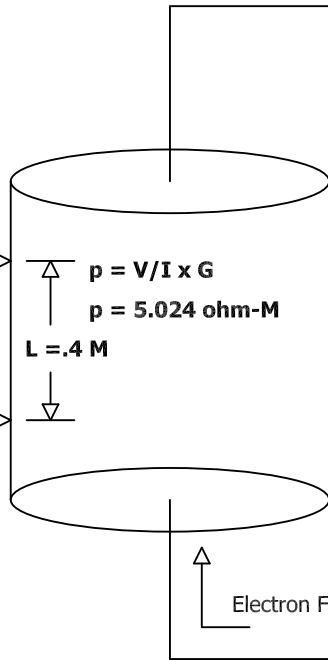


Geometric Factor
 $G = 4 \times \pi \times L = 5.024$

$V = .1 \text{ V}$

V



$\rho = V/I \times G$
 $\rho = 5.024 \text{ ohm-M}$
 $L = .4 \text{ M}$

I

$I = 100 \text{ ma.}$

100 volts

1000 ohms

1000 ohms

Electron Flow

RESISTIVITY

(c) 2005-2008 WELLOG
filename: resistivity.dwg

WELLOG

Title:	Resistivity Measurement
Drawn By:	Chuck Merritt
Date:	January 5, 2008
Revision:	1.01